

河海大学文件

关于印发《河海大学本科生毕业设计（论文）
工作若干规定(修订)》《河海大学本科毕业
设计（论文）基本规范(修订)》的通知

()

河海大学本科生毕业设计（论文）工作若干规定（修订）

河海大学本科毕业设计（论文）基本规范(修订)

()

(黑体 5 号)

河海大学

(1 号宋体居中)

(2 号黑体居中，标题行间距为 32 磅)

(宋体小 3)

**BACHELOR'S DEGREE THESIS
OF HOHAI UNIVERSITY**

(Times New Roman 2号粗体居中)

Writing the title of the paper in English here

(Times New Roman 2号粗体居中)

College XXX XXX

Subject XXX XXX

Name X X X

Directed by XXX Professor

(Times New Roman 4号居中)

NANJING CHINA

(Times New Roman 小2号居中)

(黑体小 2)

(宋体小 4, 1.5 倍行距)

.....

.....

.....

1	2	3
4		4

ABSTRACT

(Times New Roman 2)

Fluvial river processes evolve over time in response to the constant interaction between sediment and the water column. If vegetation is present within the water column, the change in turbulence characteristics will impact the movement of sediment, in particular the settling velocity. In this paper, the influence of vegetation on the settling velocities of sediment particles is studied experimentally. The non-submerged vegetation friction factor in steady uniform flow is considered by under different flume discharge quantities. The main outcomes can be summarized as follows:

Times New Roman 1.5

(黑体小 2)

.....	I
ABSTRACT	II
.....	III
1	1
1.1	1
1.1.1	1
1.1.2	2
1.2	2
1.2.1	3
1.2.2	3
1.2.3	4
1.2.4	10
1.3	

1.1

(黑体小 2)
(章标题段前为 0.8 行、段后为 0.5 行)

(黑体 4 号)

[1]

60%~70%

Times New Roman

(宋体小 4, 行缩进 2 字符, 正文行间距固定为 1.5 倍行距, 字符间距为标准)

.....

.....

.....

(黑体小 4 号, 加粗)

[2]

(宋体小 4 号)

1

[13]

$$s- * \frac{D^3}{6} = C_D \frac{2}{2g} \frac{D^2}{4} \quad 1.1$$

office

Stokes

$$C_D = 24/Re$$

1.2

(3.2)

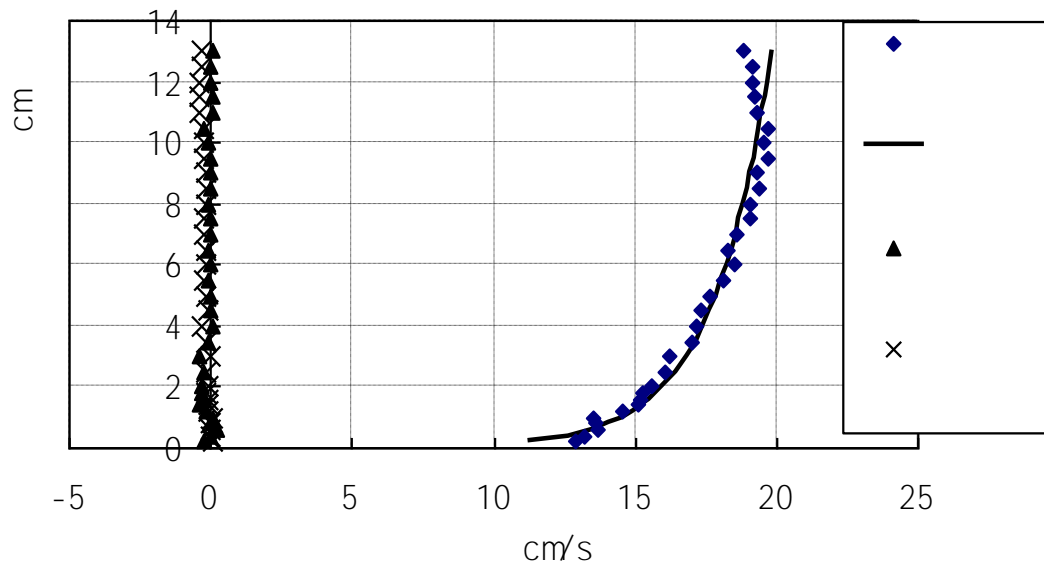
2

4.1

	H	Q	J	B	U_*
	cm	L/s	‰	cm	cm/s
w1	18	7.56	0.02	42	0.19
w2	18	11.34	0.07	42	0.68
w3	18	15.12	0.13	42	1.27
w4	18	18.9	0.21	42	2.05
w5	18	22.68	0.28	42	2.73

$$U_* \quad U_* \sqrt{JRg}$$

3



(黑体小 2)

- [1] . [M]. , 2005.
- [2] . [J].
2007 18 5 785-792.
- [3] Kouwen N,Unny T E,Hill H M. Flow Retardance on vegetated channels
[J].Journal of the Irrigation and Drainage Division 1969,95 IR2 :329-342.
- [4] Gourlay M R.Discussion of Flow Resistance in vegetated channels by Kouwen
etal.[J].Journal of the Irrigation and Drainage Division,1970,96(IR3):351-357.
- (2 Time New Roman 1.5)

(黑体 5 号)

河海大学

(1 号宋体居中)

(2 号黑体居中加粗, 标题行间距为 32 磅)

(宋体小 3)

**BACHELOR'S DEGREE THESIS
OF HOHAI UNIVERSITY**

(Times New Roman 2 号粗体居中)

Writing the title of the paper in English here

(Times New Roman 2 号粗体居中)

College XXX XXX

Subject XXX XXX

Name X X X

Directed by XXX Professor

(Times New Roman 4 号居中)

NANJING CHINA

(Times New Roman 小 2 号居中)

(黑体小 2)

2002

15m

210 TEU

185 TEU

25 TEU

(宋体小 4, 1.5 倍行距)

.....

.....

.....

1 2 3

4 4

ABSTRACT

(Times New Roman 2)

Based on the assumptions of the construction of Shanghai international shipping center, the Yangshan Port of Shanghai international shipping center had been implemented in 2002. So the shortage of the capacity of Shanghai Port and port-channel depth can be well handled. The construction of a 15m water depth of Yangshan Deepwater Port can guarantee a more powerful and solid status of Shanghai international shipping center . Yangshan Deepwater Port is mainly responsible for the transit loading and unloading tasks of its hinterland ,both within the ocean and near the ocean, international and domestic .The service object of the Yangshan Deepwater Port is positioned in a large container ship. According to projections, the capacity of the two arrangements of Yangshan port is 2.1 million TEUs,1.85 million TEU of International lines and 250 000 TEU of the extension lines.

(Times New Roman 4 1.5)

Key words Times New Roman 4 :Yang shan port Plane project Structure design internal force calculation.(Times New Roman 4)

(黑体小 2)

.....	I
ABSTRACT.....	II
.....	III
1	1
1.1	1
1.2	2
.....	3
.....	4
1.3	4
2	8
2.1	8

(一级标题宋体 4 号加粗，二级及以下标题宋体小 4，1.5 倍行距)

(黑体小 2)

(章标题段前为 0.8 行、段后为 0.5 行、1.5 倍行距)

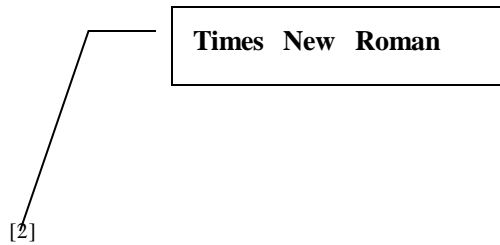
(黑体 4 号加粗)

15m

(宋体小 4, 行缩进 2 字符, 正文行间距固定为 1.5 倍行距, 字符间距为标准)

15m

(黑体小 4 号, 加粗)



(行缩进 2 字符, 宋体小 4 号, 1.5 倍行距)

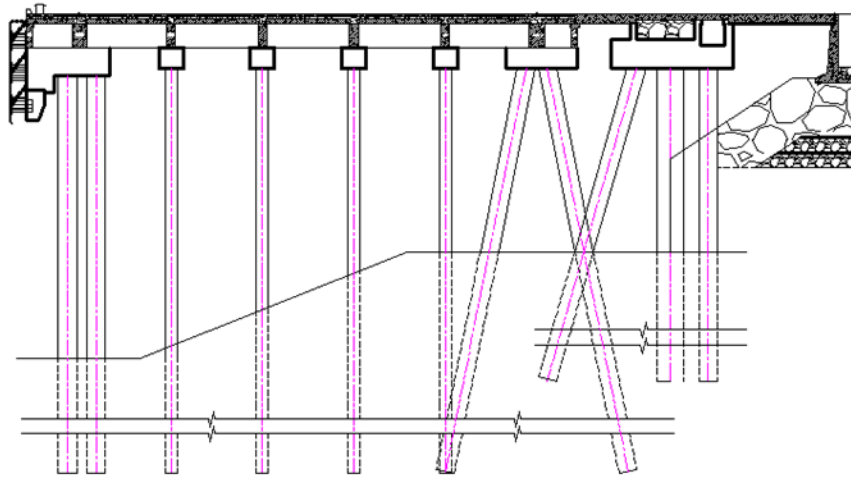
$$Q_d = \frac{1}{R} (U \quad q_{f_i} l_i \quad q_R A) \quad 3.2$$

(3.2) office

2

Table4.4 Yard area calculation table

		TEU	TEU	
		23275	7162	105800
		499	154	2300
		167	52	800
		7963	2450	36200
		342	106	1600
		114	35	600
		3333	635	9400
		13334	2540	37600



(黑体小 2)

- [1] 2005.
 - [2] 2004.
 - [3] 1999.
 - [4] 2004.
 - [5] () 2000.
 - [6] 1996.
 - [7] 2000.
- (2 Time New Roman 1.5)

()

(黑体五号)

河海大学

(一号宋体居中)

(二号黑体居中，标题行间距为 32 磅)

(黑体小三)

**BACHELOR'S DEGREE THESIS
OF HOHAI UNIVERSITY**

(Times New Roman 二号粗体居中)

Writing the title of the paper in English here

(Times New Roman 二号粗体居中)

College XXX XXX

Subject XXX XXX

()

(黑体三号)

H

“ ”

(宋体小四)

.....

.....

.....

(黑体小四)

(宋体小四)

Abstract

(Times New Roman)

The ideological and political education is a political practice of man's ideology; in essence, it is an operating process of power. On the one hand, in the present ideological and political education, the abstract concept and speculation overshadows the real ideological and political education in reality; on the other hand, through removing differences between education and the ideological and political education, it eliminates the authority dimension of the ideological and political education. Foucault's discipline theory suggests the possibility of embedding micro-power in the daily life, which opens the research scope of power anthropology and provides theoretical inspirations for the interpretation of the ideological and political education.

(Times New Roman)

Key words Times New Roman : the ideological and political education; disciplinary power(Times New Roman 4)

(黑体四号)

.....	I
ABSTRACT.....	II
.....	III
 1
— 1
— 1
— 2

(一级标题宋体 4 号加粗，二级及以下标题宋体小 4)

(黑体小二)

——

(宋体小三)

(章标题段前为 0.8 行、段后为 0.5 行)

(黑体四号 加粗)

(黑体小四号 加粗)

“

” 1

距为标准)

[1] (宋体小四, 行缩进 2 字符, 正文行间距固定为 1.5 倍行距, 字符间

Times New Roman

.....
.....
.....

di sci pl i ne

(表格名称：黑体小四加粗、居中)

	+
	1. 2. 3. 4. " " "
	1. 2. 3. " " "
	1. 2. 3. " "

(内容：宋体五号)

" "

H

" "

" "

(引文用仿宋_GB2312 五号)

² H 317 2010 4 17
³ H 2010 6 20

(黑体小三)

[1] [] [M].
2003.

[2] [] [M].
. 2003.

[3] [] —— [M].
1997.

(2 Time New Roman 1.5)